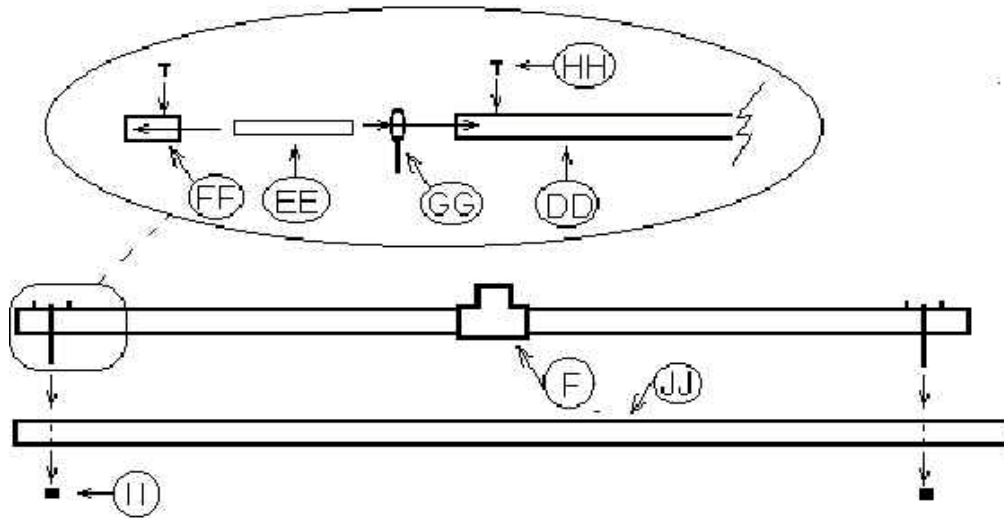


## Greenhouse Parts List-6' x 9'(approx.)

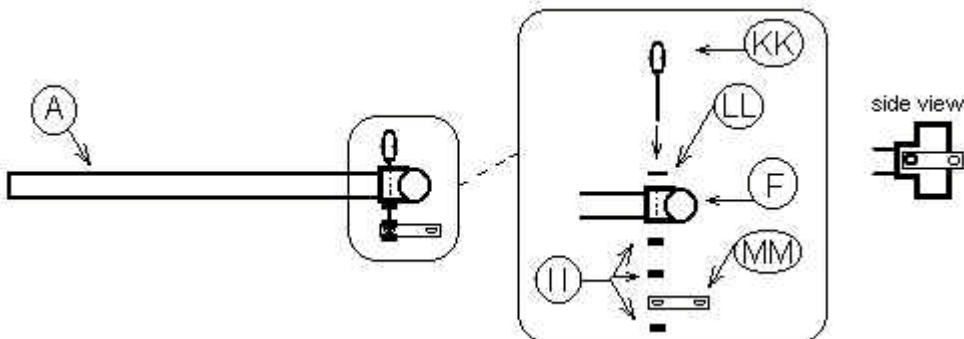
Prt	Qty	Description	Prt	Qty	Description
A	20	36 inch tube (1 inch sch. 40 PVC)	B	2	72 inch tube (1 inch sch. 40 PVC)
C	4	16-1/2 inch tube (1 inch sch. 40 PVC)	D	6	3-way L - 1 inch ( <a href="#">Circo item #33</a> )
E	8	4-way LT - 1 inch ( <a href="#">Circo item #43</a> )	F	10	Tee - 1 inch PVC fitting
G	8	58 inch tube (1 inch sch. 40 PVC)	H	1	71-1/4 inch tube (1 inch sch. 40 PVC)
I		Door Hinge - (will assemble)	J		Door latch - (will assemble)
K	2	34-1/4 inch tube (1 inch sch. 40 PVC)	L	2	32 inch tube (1 inch sch. 40 PVC)
M	6	50 inch tube (1 inch sch. 40 PVC)	O	4	L/90 - 1 inch PVC fitting
P		Connector 1 lft, 1 rgt. - (will assemble)	Q		Connector 1 lft, 1 rgt. - (will assemble)
R		Connector. - (will assemble 4)	S		Connector 1 lft, 1 rgt. - (will assemble)
T	1	Top/sides Cover (see bottom page)	U	1	Back Cover (see bottom page)
V	1	Front Cover (see bottom page)	W	1	Door Cover (see bottom page)
X	98	Snap Clamps 4" X 1" ( <a href="#">Circo Item #13</a> )	Y	4	Snap Clamps 4' X 1" ( <a href="#">Circo Item #03</a> )
Z	4	18 inch tube (1 inch sch. 40 PVC)	AA	12	1-3/4 inch tube (1 inch sch. 40 PVC)
BB	10	45 degree - 1 inch PVC fitting	CC	4	X /cross - 1 inch PVC fitting
DD	2	31 inch tube (1 inch sch. 40 PVC)	EE	2	8 inch Metal EMT conduit (3/4" dia.)
FF	2	3 inch tube (1 inch sch. 40 PVC)	GG	2	3/8-16 x 4" Steel Eye Bolt
HH	4	Metal screw 8 x 3/4 (Pre-drill PVC and conduit. Conduit should be tight against PVC)	II	5	3/8-16 Lock Nut
J J	1	71-1/2 inch tube (1 inch sch. 40 PVC)	KK	1	3/8-16 x 5" Steel Eye Bolt
LL	1	Thick washer (plastic preferred)	MM	1	5/16" x 2" U Bolt Plate

### Initial Parts Assembly

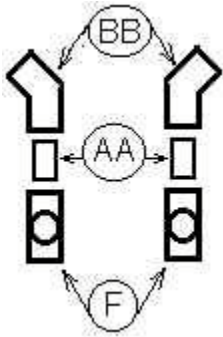
#### I. Pre-built door hinge (or use hinge from [www.pvcplans.com](http://www.pvcplans.com))



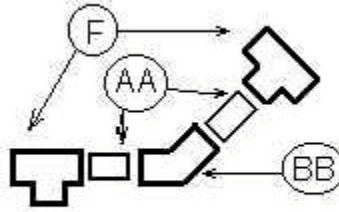
#### J. Pre-built door latch assembly



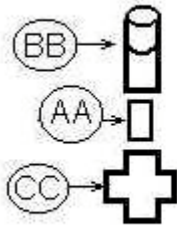
P. Connector - 1 lft, 1 rgt



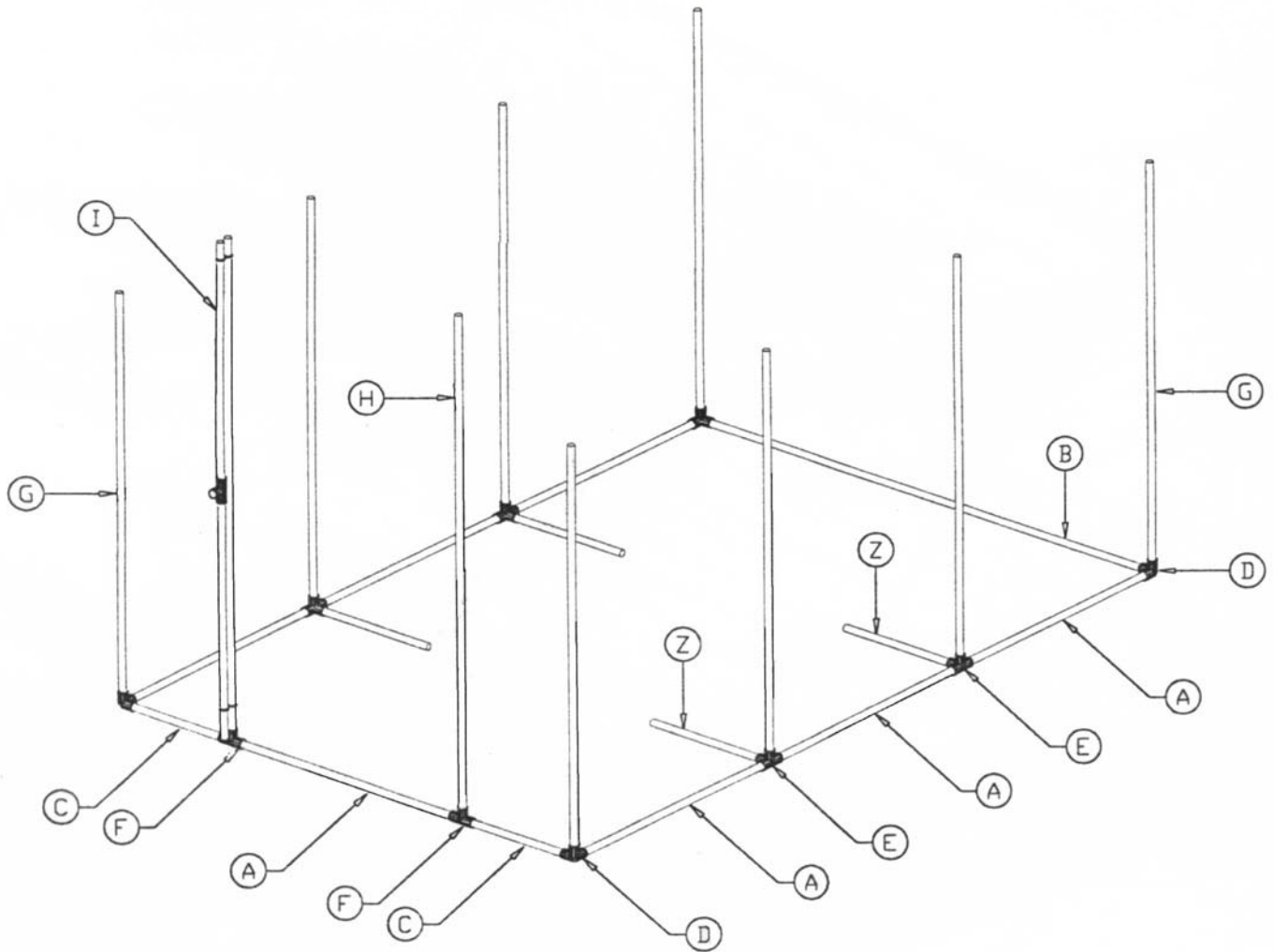
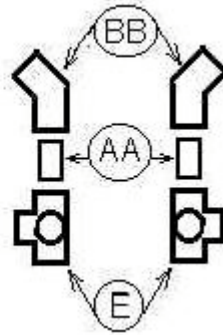
Q. Connector - 1 lft, 1 rgt



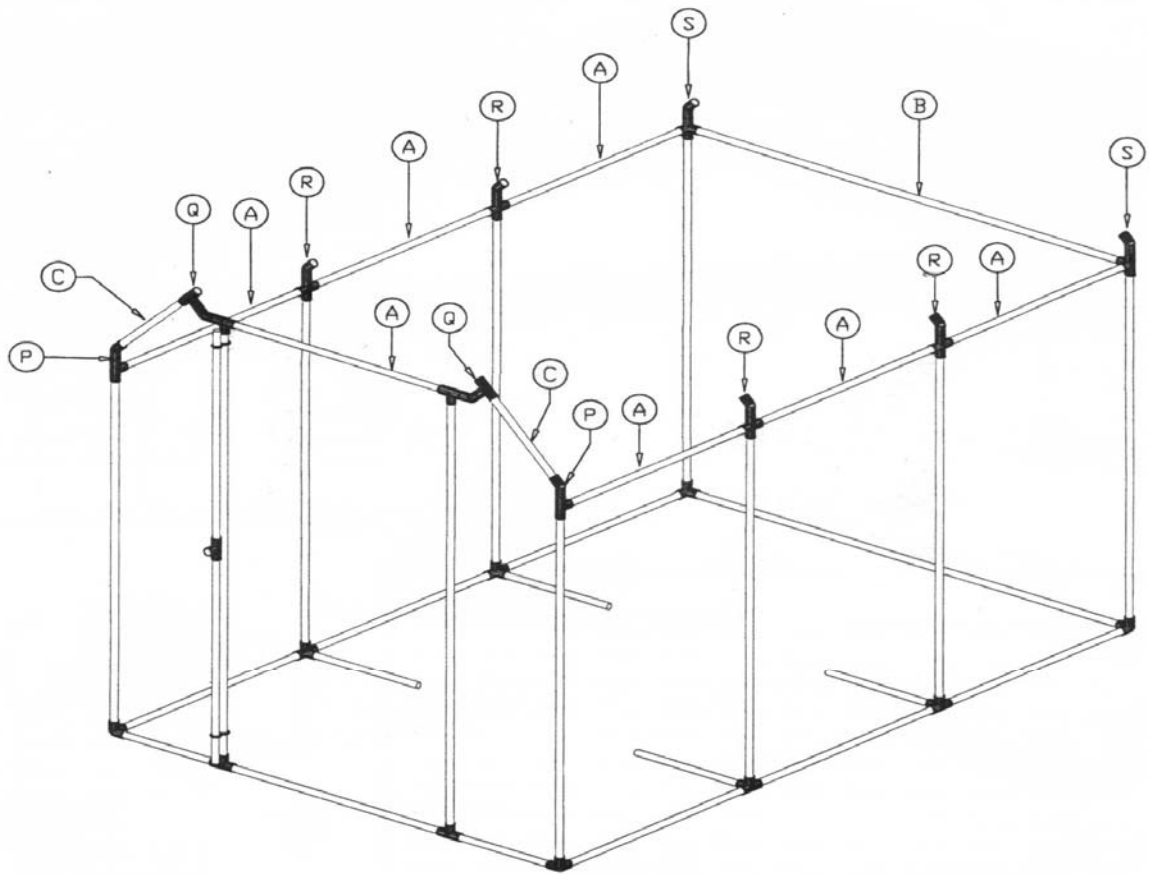
R. Connector-4



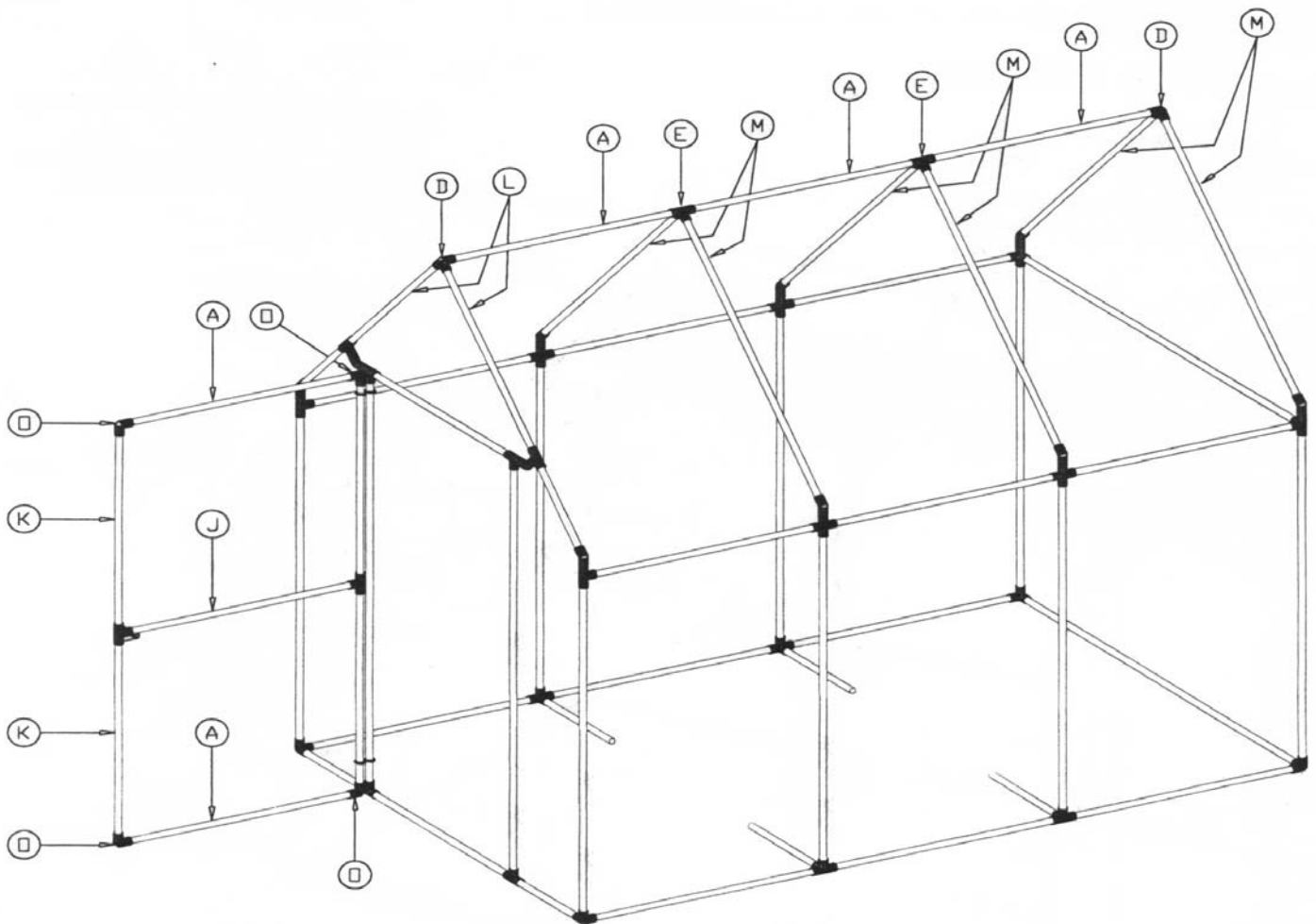
S. Connector - 1 lft, 1 rgt



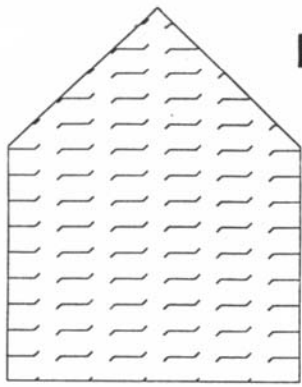
Base Assembly - First



**Walls Assembly - Second**

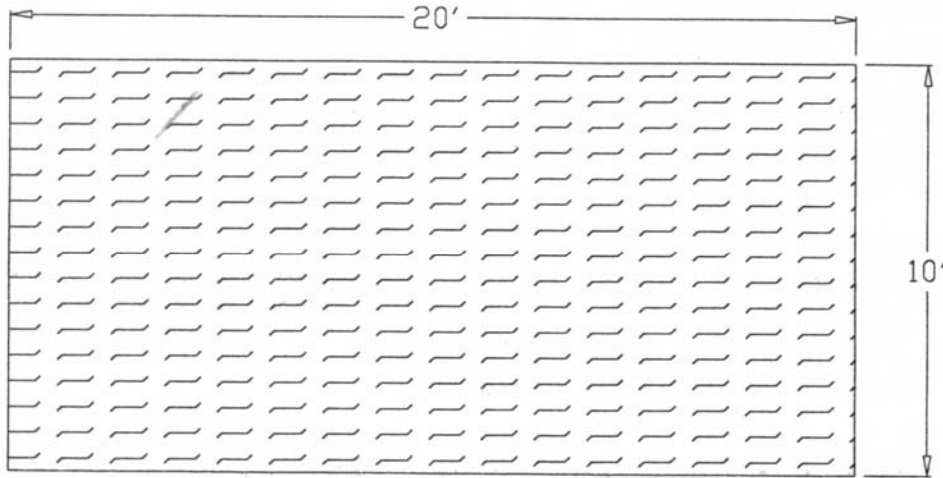
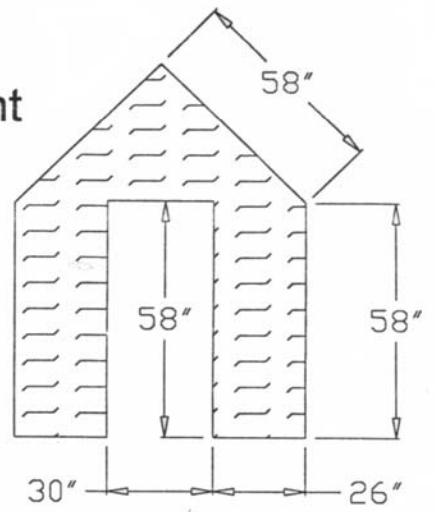


**Roof Assembly - Third**

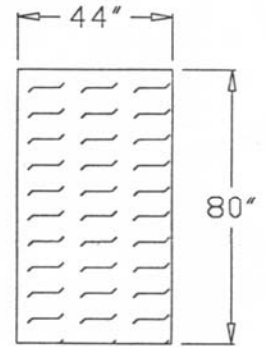


Back

Front

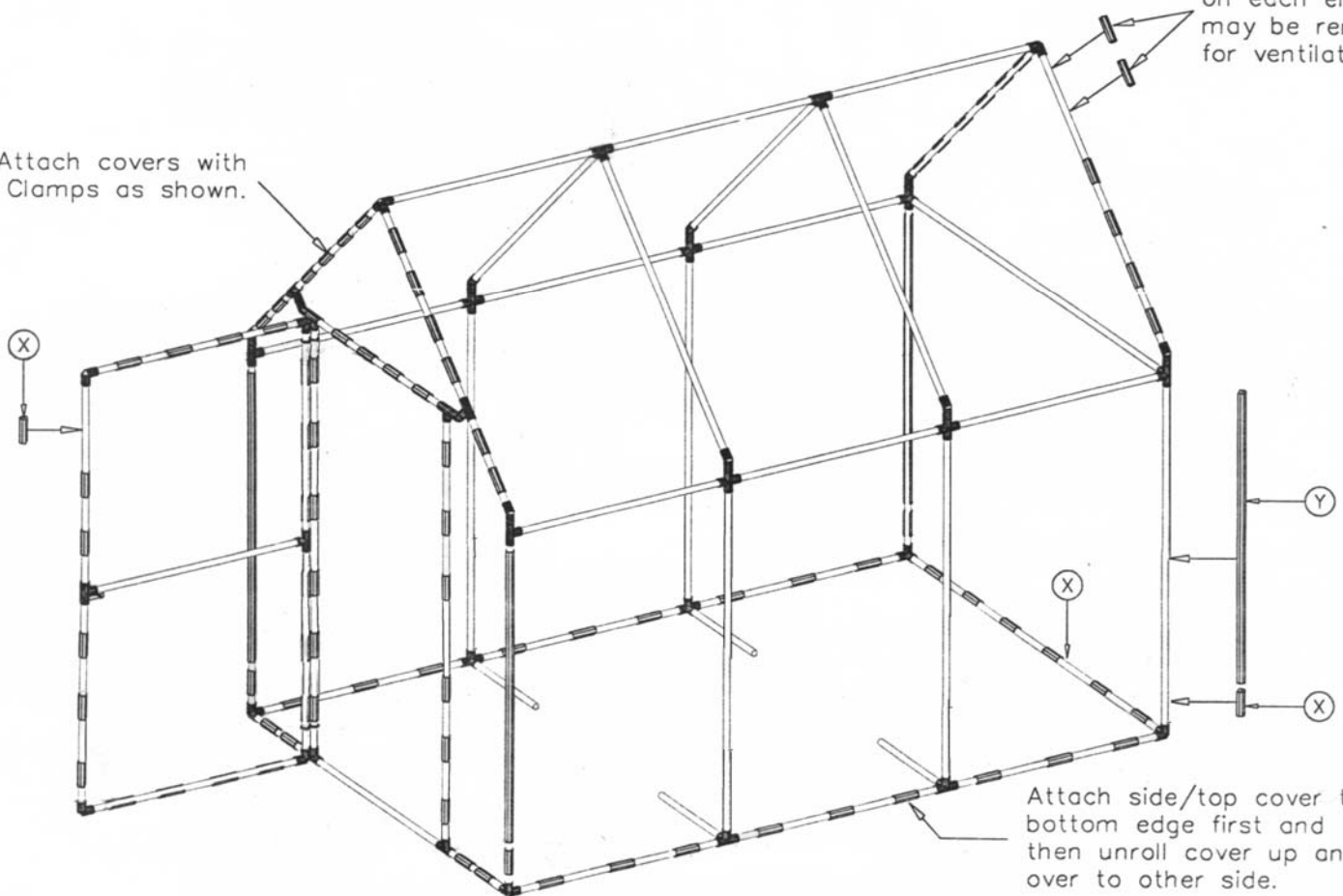


Top / Sides



Door

Attach covers with Snap Clamps as shown.



Top Four clamps on each end may be removed for ventilation.

Attach side/top cover to bottom edge first and then unroll cover up and over to other side.